

DAISY SPRAY WITH RED ROSEBUDS PROJECT

PROJECT 9

Permission granted by Gretchen Cagle Publications Inc for adaptation of Gretchen Cagle's design "A painters legacy" and "Daisies, leaves and waterdrops". Previously published in Heart to Heart. Forever Always and Sharing the secrets. (copyright 1999, 1998)

Materials

Piece of fabric approx 25 x 25cm (I have used a 220 count kona cotton)

DMC Stranded Cotton as listed

Crewel Needle size 9 & 10

Frame or hoop approx 7 ins

Preparation

Wash and iron the fabric.

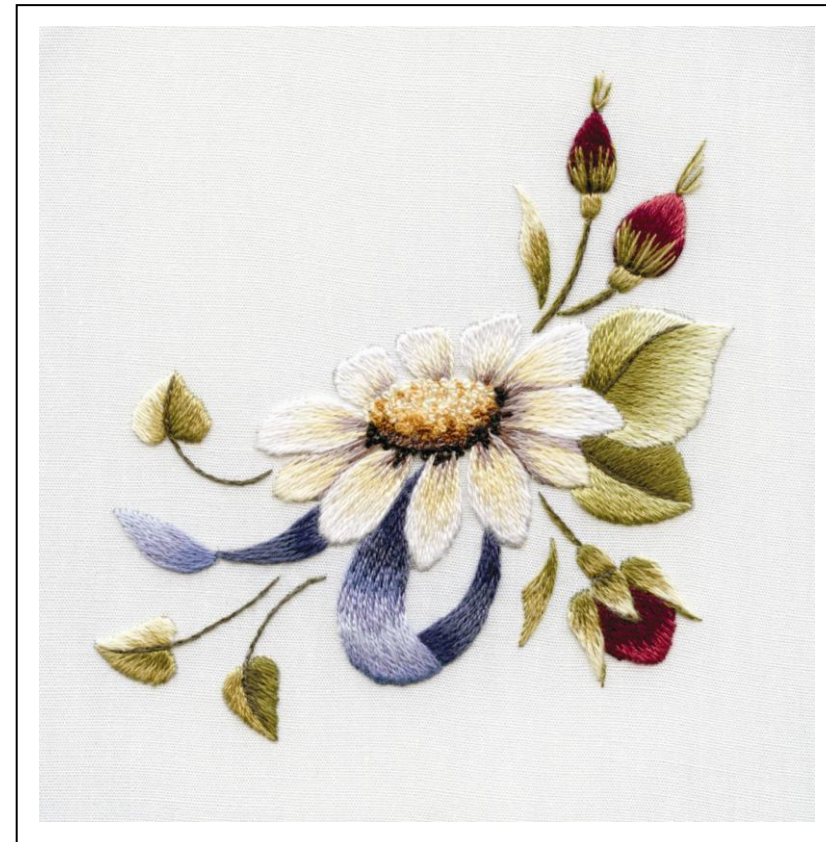
Transfer the outlines onto the fabric with a pencil

Draw in the guidelines with a pencil

Mount in hoop or frame ensuring that the fabric is drum tight

Stitch Diagram

Use the diagram below for placement of colours and guidelines

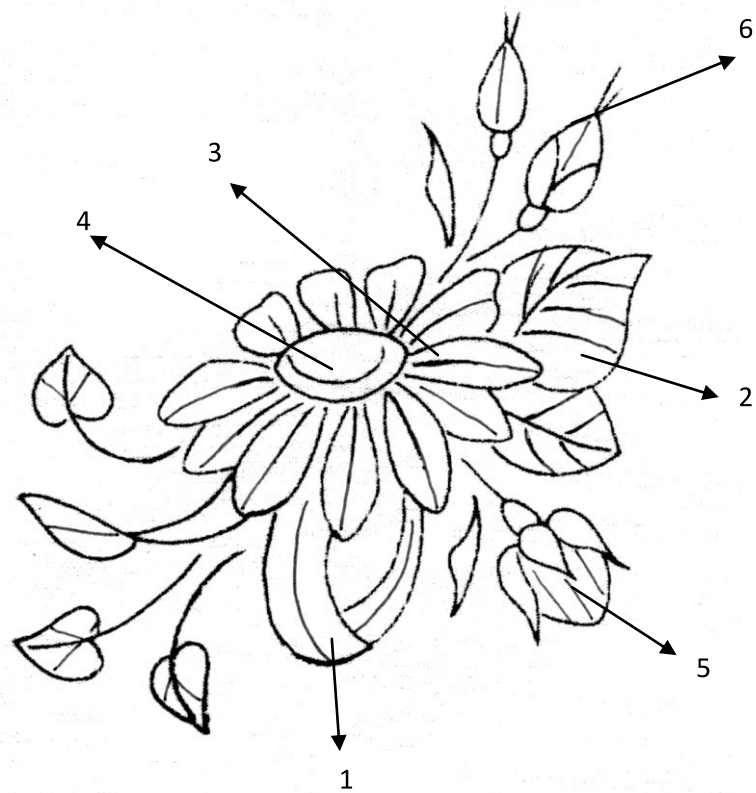


THREAD LIST

DMC Stranded cotton used in this design

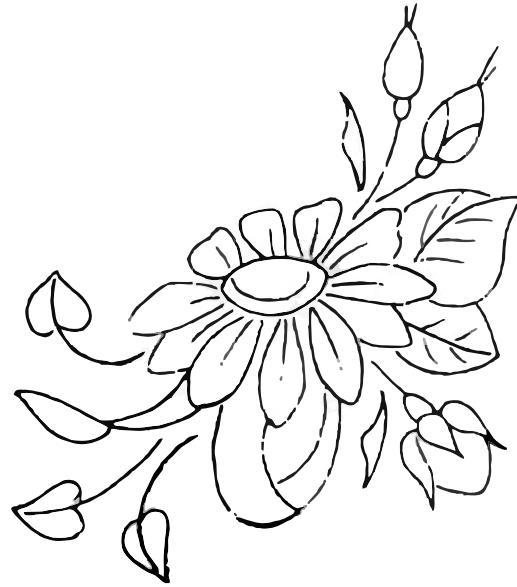
3747	746
159	3827
160	976
161	975
336	779
3047	3371
3013	3831
3012	777
3011	902
935	3047
BLANC	371
3823	3011
3855	3021
3861	

STITCH DIAGRAM



TRACING OUTLINE

Actual size



DAISY SPRAY WITH RED ROSEBUDS INSTRUCTIONS

One strand of DMC Stranded cotton has been used unless otherwise indicated.

RIBBON

- A. 3747
- B. 159
- C. 160
- D. 161
- E. 336



1. RIBBON

Start with the back portion of ribbon. Do not outline with split stitch. Start at the top near the daisy and work down towards the base in long and short stitch. In the first row use 2 strands of thread and thereafter use 1 strand as follows E D C D E

Next work the front portion. Outline the base only with split stitch using 2 strands B. Start at the wider top portion and work down towards the base near the daisy. In the first row use 2 strands of thread and thereafter use 1 strand as follows A B C D E

Ribbon tail

Work the back portion first. Do not outline with split stitch. Start at the top near the daisy and work down towards the base in long and short stitch. In the first row use 2 strands and thereafter use 1 strand as follows D E

Next work the front portion. Outline the base only with split stitch using 2 strands C. Work from the wider base towards the narrow tip in long and short stitch as follows: A B C

LEAVES

- A. 3047
- B. 3013
- C. 3012
- D. 3011
- E. 935



2. LEAVES

Outline each leaf with split stitch using one strand B.
Fill on either side of the centre vein in long and short stitch from the outside edge in towards the centre.

Small leaf

Side one = B C

Side two = C D E

Work the centre vein in split stitch using E.

Larger leaf

Side one = A B C D

Side two = A B C D E

Work the centre vein in split stitch using E.

Very small leaves – fill on either side of the vein with satin stitch use B on one side and D on the other.

Fill all the leaf stems with split stitch using one strand D.

2. DAISY PETALS

- A. BLANC
- B. 3823
- C. 3855
- D. 3861



3. DAISY PETALS

Outline each petal with split stitch using one strand A.

Fill with long and short stitch from the outside edge in towards the centre shading with A B C D

On the smaller petals shade with B C D

DAISY CENTRE

- A. 746
- B. 3827
- C. 976
- D. 975
- E. 779
- F. 3371



4. DAISY CENTRE

Fill the centre with French knots using two strands and one twist. Shade from the outside down towards the base using A B C D E.

Finally take one strand of F and scatter a few loose French knots around the base.

LARGE ROSEBUD

- A. 3831
- B. 777
- C. 902
- D. 3047
- E. 371
- F. 3011
- G. 3021



5. LARGE ROSEBUD

Outline the bud with split stitch in one strand A. Fill with long and short stitch shading from A B C.

Outline each sepal with one strand E. Fill each one with long and short stitch shading from D E F. Add a few straight stitches at base with G to make a shadow.

Fill base with satin stitch in F.

Work the stems with 2 rows of adjacent split stitch in E F.

SMALL ROSEBUDS

- A. 3831
- B. 777
- C. 902
- D. 3047
- E. 371
- F. 3011



6. SMALL ROSEBUDS

Outline each rosebud with split stitch in one strand A. Pad the buds with satin stitches across the shape as shown.

Fill with long and short stitch in shades of A B C. On the very small one use B C.

Fill the bases with satin stitch in E. Work a few straight stitches from the base up into the bud using E & F.

Work a few straight stitches at the top of the bud with E & F.

Fill the very small leaves with long and short in D E F.

Fill the stems with 2 rows of adjacent split stitch in E F.